

About Us

Thousand Lights Lighting (Changzhou) Limited (THOUSLITE) is a high-tech enterprise focusing on multi-channel LED lighting technology and light quality management. THOUSLITE produces a variety of LED-based standard lighting environments and is active in international technical conferences and standardization societies. THOUSLITE's full range of multi-channel LED lighting products are used for lighting research, industrial color assessment, total appearance communication, and camera & sensor testing. THOUSLITE also provides customized products and services for your lighting needs. Our 36-hour fast response policy provides you with superior service. Based on our extensive technical experience, THOUSLITE is committed to provide you with excellent products, advanced solutions, and professional service.

Thousand lights lighting (Changzhou) Limited (Sino - British Joint Venture)

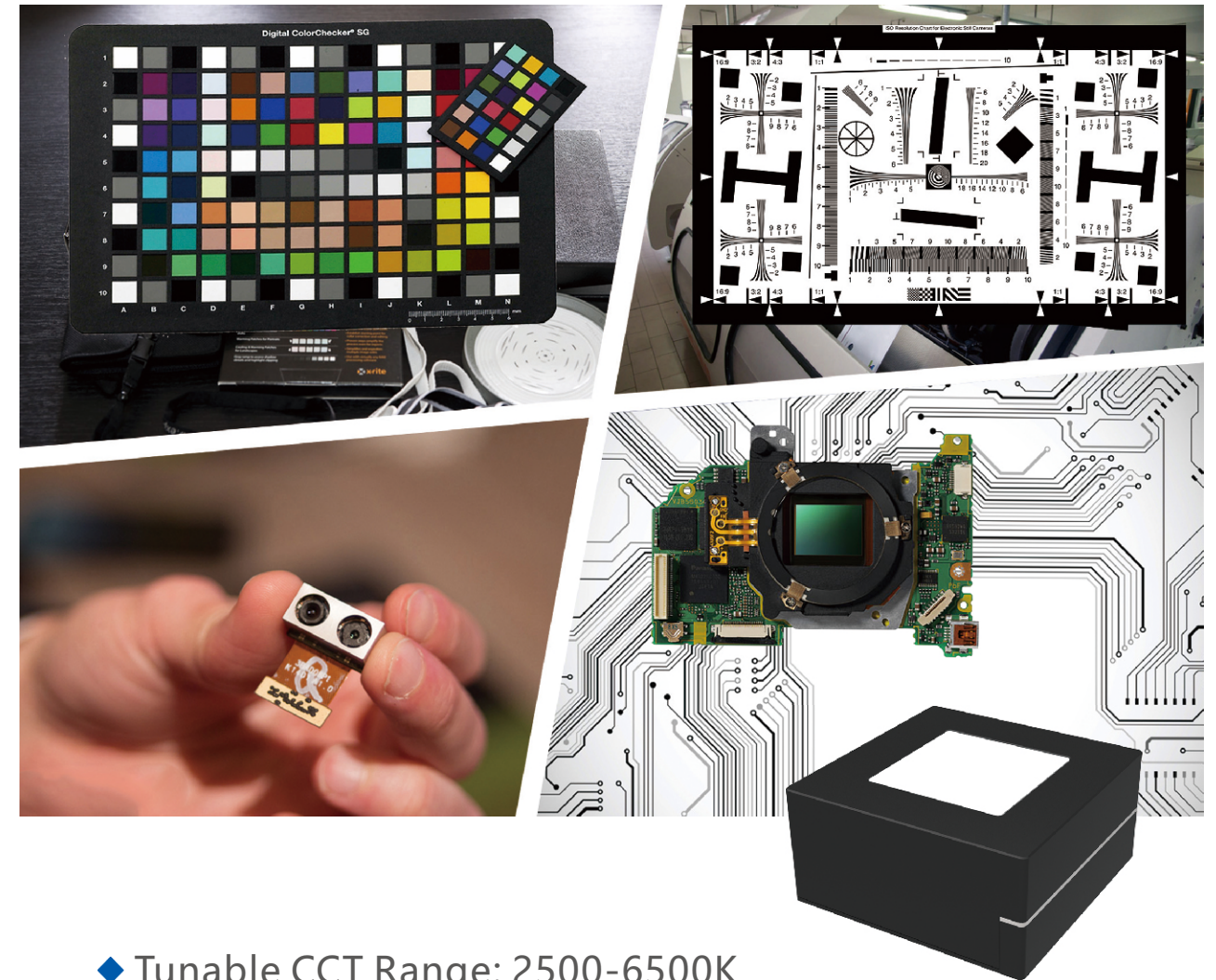
Phone: +86-0519-85289860

Email: sales@thouslite.com

Address: Building 32A, No.28 Panyang Road, Liando U Valley,
Xinbei District, Changzhou City, Jiangsu Province,
China, 213031



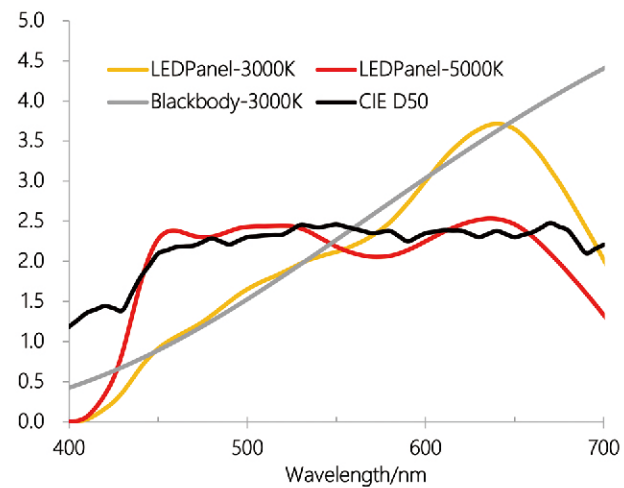
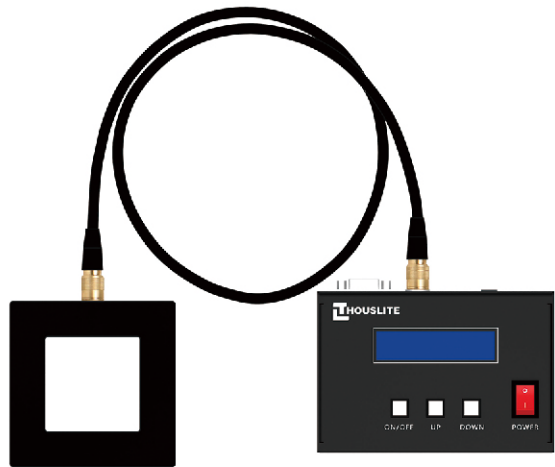
LEDPanel Multi-channel LED Calibration Source



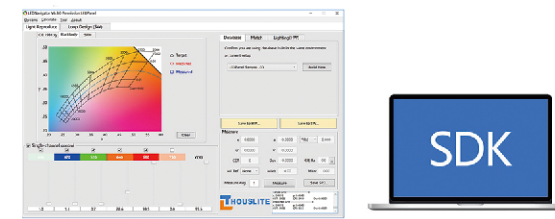
- ◆ Tunable CCT Range: 2500-6500K
- ◆ High CCT Accuracy with Smooth SPD Output
- ◆ Exceptional Uniformity and Stability
- ◆ Hardware Support for up to 80 illuminants
- ◆ Fast and Precise Calibration Process
- ◆ Extended Lifetime
- ◆ Flicker-Free Operation

LEDPanel Multi-channel LED Calibration Source

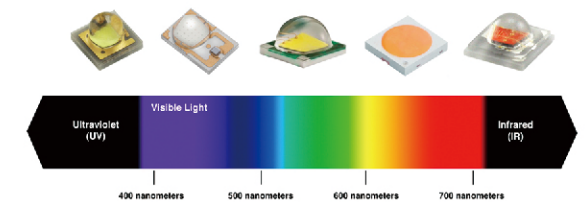
THOUSLITE LEDPanel is a cutting-edge illuminants designed for **camera module** and **sensor calibration** in production lines. Powered by our exclusive LEDNavigator software and a set of LED channels with varied Spectral Power Distribution (SPD), it precisely simulates Correlated Color Temperature (CCT) from **2700K to 6500K** with $< \pm 50K$ accuracy, ensuring a consistently **smooth light output** across the visible range. The hardware, capable of storing up to 80 illuminants, facilitates easy measurement, reprogramming, and calibration using LEDNavigator and a spectrometer. Its exceptional optical design guarantees illumination surface uniformity exceeding **96%**. Additionally, the inclusion of a Software Development Kit (SDK) in various languages allows seamless integration into users' software solutions.



- **Dynamic Lighting**
Programmable light sequence and interval.
- **Software Development Kit in Different Languages**
Enables seamless integration into users' own software.



- **LED Channel Wavelength Selection Service**
Provides LED channel wavelength selection service from UV, VIS to NIR.



- **36 Hours Customer Response**
Guarantees a response within 36 hours for any user-reported problems or product-related issues during working days.

Key Features

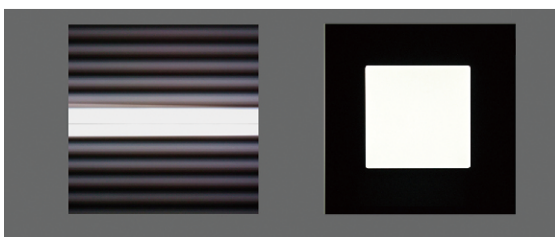
- **High-Quality Blackbody & Daylight Simulator**
Accurately reproduces a wide range of sources, from tungsten to daylight, varying Correlated Color Temperature (CCT) from 2700K to 6500K with CCT accuracy $< \pm 50K$. The output SPD maintains smoothness across the entire visible range.



- **Luminance Adjustable with No Warm-Up Time**
Dimmable light while preserving quality, with no warm-up time.



- **High Uniformity and Flicker-Free Output**
Achieves over 96% surface uniformity and flicker-free lighting.

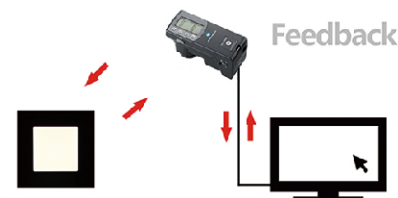


- **Excellent Stability**
Optimized heat management and driver board design ensure excellent long-term stability.

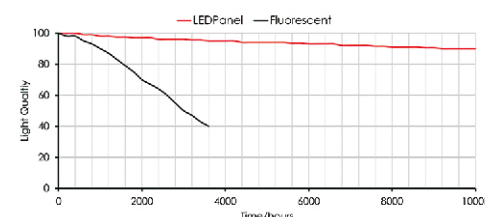
- **Save Up to 80 Illuminants**
LEDPanel hardware can store up to 80 illuminants, reprogrammable and calibratable via software.



- **Fast & Accurate Calibration**
Users can measure, reprogram, and calibrate the illuminant independently, ensuring consistency superior to conventional lighting. Utilizes a spectrometer and LEDNavigator software.



- **Longer Lifetime**
Significantly longer lifespan compared to fluorescent technology.



Specifications

	LEDPanel-5050	LEDPanel-290224
LED channels	Default 4 channels, Max 6 channels	
Spectral range	400-780nm	
LED channel drive method	Amplitude Modulation	
Resolution	10 bit (1024 steps dimmable for each channel)	
Warm up time	<1s	
LED Lifetime	>10,000 hours	
Capacity	80 light source in switch box	
Predefined illuminants	2800K, 5000K	
Output surface dimension	50mmx50mm	290mmx224mm
Output surface uniformity	96±2% (Min/Max)	95±3% (Min/Max)
CCT tunable range	2700~6500K	
CCT accuracy	<±50K	
Illuminance tunable range	10lx-2000lx	
Short-term stability	D65 < +20K, D50 < +10K; Luminance < ±0.5%	
Long-term stability	D65 < +25K, D50 < +15K; Luminance < ±1.5%	
Software instrument compatibility	Konica Minolta CL500A, Konica Minolta CS2000, THOUSLITE FS Spectrometer, Jeti Specbos 1211UV spectroradiometer	
Electrical	100-240V, 50/60Hz, 8W Maximum	100-240V, 50/60Hz, 15W Maximum
Operating ambient temperature	0-30°	
Connection	Switch box, USB cable	
Dimensions(L/w/H) & Weight	90x90x46mm, 0.5kg	326x362x32mm, 4kg
Scope of delivery	LEDPanel light source x1, Switch Box x1, Adapter x1, Power Supply Cable x1, USB cable x1	
Software (optional)	Modules in LEDNavigator: Light simulator, Feedback, Dynamic Lighting, Single channel control; SDK available on request	