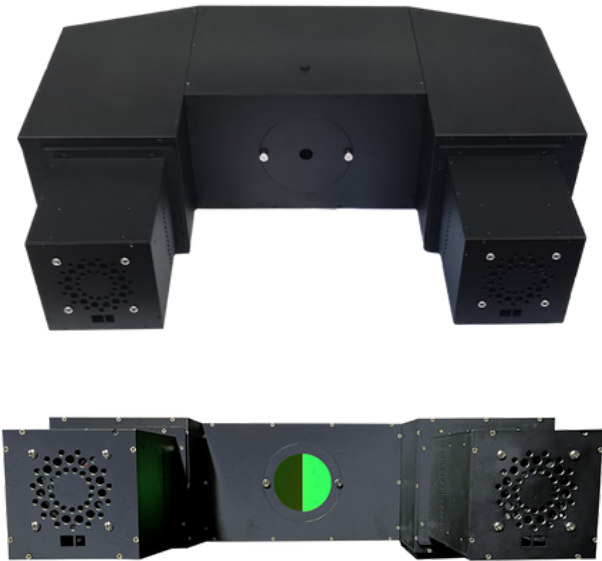


LEDMax

LEDMax is a trichromator that enables the creation of custom observer color matching functions using the Maxwell method. It includes 18 channels to create a number of tertiary combinations for color matching. The results are reported for both LMS and XYZ color matching functions.

[Explore More](#)



	LEDMax-P18
LED channels ^{*1}	18 channels
Spectral range	400-700nm
LED channel drive method	Amplitude Modulation
Resolution ^{*2}	12bit (4096 steps dimmable for each channel)
Warm up time	10 minutes
Paek Wavelength of LED (±5nm)	405 415 432 441(Broad band) 449 461 475 508 526 546 549 576 595 606 636 662 675 706
Observation circle size	2° field of view: Φ17mm 10° field of view: Φ88mm
Electrical	230V/110V 50/60Hz 100W (max)
Connection	USB cable
Dimensions(L/W/H)	662*495*180mm
Weight	28 Kg
Scope of delivery	Light source、 control box、 power cord、 connecting cord of light source、 connecting cord from USB to 485、 485 cord、 SOP
Software	Single channel control(.DLL)

^{*1} : The number of LED kinds.
^{*2} : Actually 4000 steps can be used because some steps for low luminance calibration.